



Location criteria

for activities involving substance that may
be released in to water paths or air path in
case of accidents

Virginia Fusé

Convention on the Transboundary Effects of Industrial Accidents



Kind of activities to consider for use of location criteria

Activities involving substances that

fall under category 3, 4, 5 or 8 of part I of annex I to the Convention and

may be released into water or in the air in the event of an accident



Principle for use of location criteria on water path

Whether or not an activity is capable of causing transboundary effect in such an event should be **decided by the Party of origin**, preferably **in consultation** with any bilateral or multilateral body for cooperation between concerned Parties.

- Application of simple criteria (incl. existence of river warning and alarm systems as well as distance to the border) as elements for consultation and decision
- If necessary, risk assessment



General distance criteria

- JEG-recommendation: distance between the location of the hazardous activity and the border corresponding approximately to a flowing period of **two days** of average flow velocity

Attention !

The distance is made up of three components:

- path from the activity to a water course (“may be released into water in the event of an accident”)
- path from the water course to an international/transboundary water course
- path from the international/transboundary water course to the border



Path from activity to water course I

- Look at the way substances could **in a “worst case”** enter the water path
 - directly, i. e. flowing at the surface or into groundwater
 - indirectly, e. g. via drainage system
- Look at the quantity of substances that could enter the water path **in a “worst case”**
- To look adequately at these elements you should have in mind a few → possible scenarios, therefore **a sound knowledge of the activity**



Path from activity to water course II

- Think of a few scenarios
- On the basis of these reflexions
- Estimate the time between leak and entry into water (again, “**worst case**”)
- Estimate whether relevant or not for the Convention and document your findings for later consultation



Path from the water course to an international/transboundary water course

- Look at the **existing national river warning and alarm systems AND contingency plans** to be **enacted** in case of alarm
- Estimate the time between entry into water and entry into international/transboundary water course



Path from the international/transboundary water course to the border

- Look at the **distance** between international / transboundary water course and the border
- Look at the **existing international river warning and alarm systems AND contingency plans** to be enacted in case of alarm
- **Estimate the time** between entry into international/transboundary water course and border
- **Estimate the total time** between accident and effects at the border
- **Look at the possible effects**



Summary

— **Look at**

- catchments areas
- activities with substances/quantities \geq Annex 1
- the **possibilities** of industrial accidents
- the distances involved, at natural retentions, etc.

— **Estimate** the times involved and possible effects

— **Identify** the hazardous installations

— **Consult** concerned Parties, adequate bodies

— **Improve** your identification on the basis of the consultation



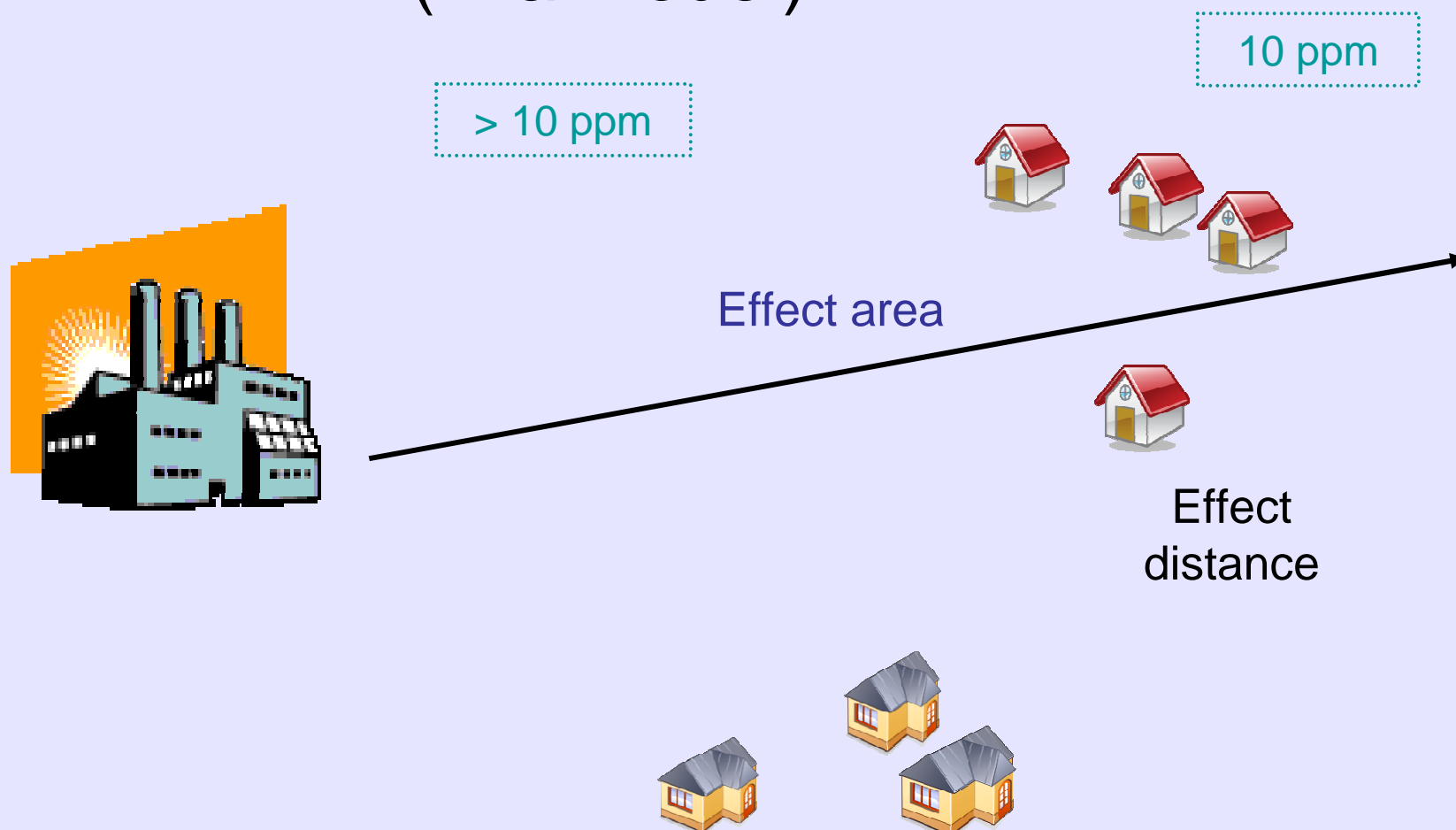
Principle for use of location criteria on air path

Whether or not an activity is capable of causing transboundary effect in such an event should be **decided by the Party of origin**, preferably **in consultation** with any bilateral or multilateral body for cooperation between concerned Parties and based on:

- Involve substances that may cause a fire or explosion;
- Involve toxic substances that may be released into the air in the event of an accidents
- Which are within 15 Km from the border
- If necessary, risk assessment

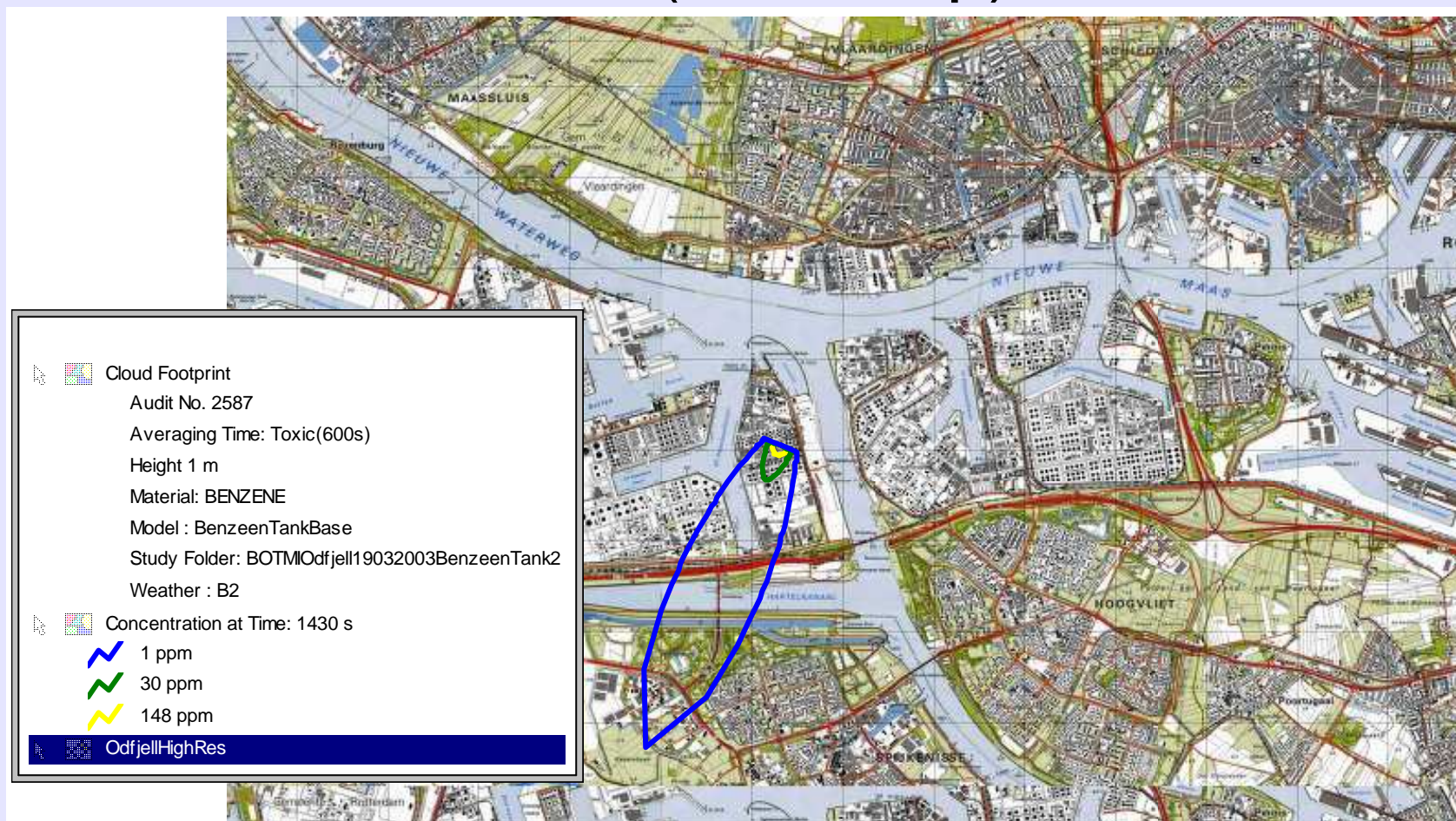


How to apply the location criteria? (in a model)





How to apply the location criteria? (on a map)





UNECE

United Nations Economic Commission for Europe

**You have complied with your obligation only
after you have**

NOTIFIED THE CONCERNED PARTIES !

PLEASE NOTE



Virginia Fusé

TEIA Convention secretariat

virginia.fuse@unece.org

Thank you